

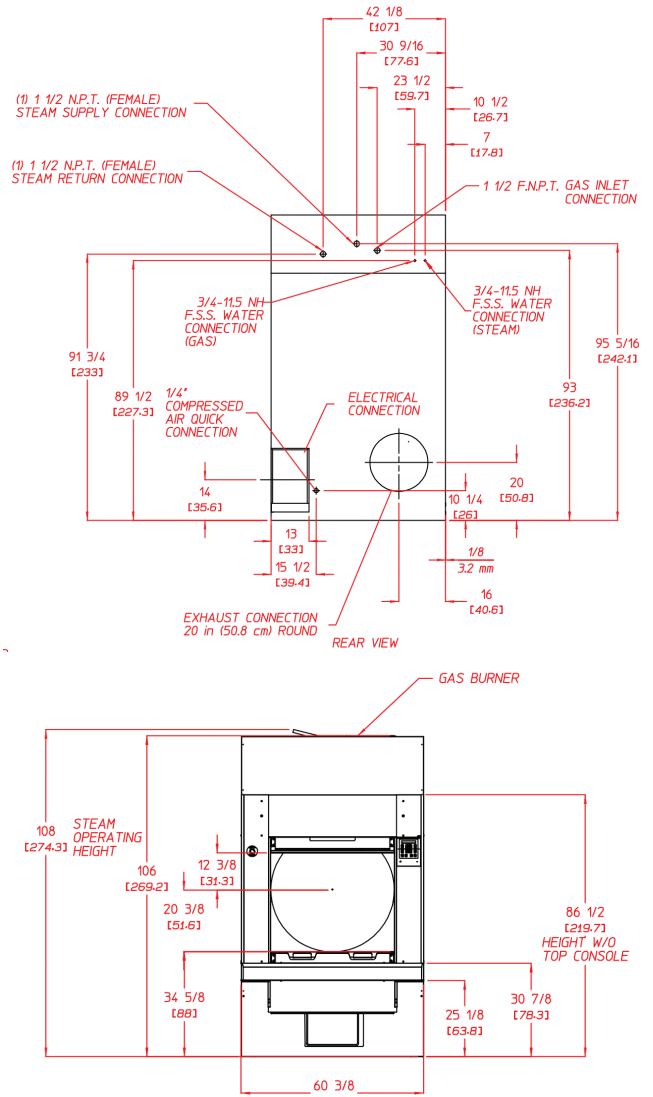


## M202 Specifications

Tumbler Capacity (dry weight)	200 lbs. (90.72 kg)			
Tumbler Diameter	55-5/8 (141.29 cm)			
Tumbler Depth	43-1/2 (110.49 cm)			
Tumbler Volume	61.20 cu ft (1732.99 L)			
Tumbler/Drive Motor	3 hp (2.24 kW)			
Blower/Fan Motor	7-1/2 hp (5.59 kW)			
Door Opening (Diameter)	40-3/4 (103.50 cm)			
Door Sill Height	34-5/8 (87.95 cm)			
Water Connection	3/4 - 11.5 NH			
Dryers per 20ft40ft Container	3 / 7			
Dryers per 48h/53Truck	8 / 8			
Width	60-3/8			
Depth	54			
Height	106			
<b>GAS</b>	Voltage Available	208-575v 3ø 3,4w 50/60 Hz		
	Approx. Net Weight	2,100 lb (952.54 kg)		
	Approx. Shipping Weight	2,166 lb (982.48 kg)		
	Airflow	50/60 Hz	4,200 cfm (118.9 cmm)	
	Heat Input	590,000 Btu/hr (148,678 kcal/hr)		
	Exhaust Connection (Diameter)	20 (50.80 cm)		
	Compressed Air Connection	1/4 Quick Connection		
	Compressed Air Volume	4.25 cfm (0.12 cmh)		
Inlet Pipe Connection	1-1/2 F.N.P.T.			
<b>ELECTRIC</b>	Voltage Available	208-575v 3ø 3,4w 50/60 Hz		
	Approx. Net Weight	2,349 lb (1,065.49 kg)		
	Approx. Shipping Weight	2,515 lb (1,140.78 kg)		
	Airflow	N/A		
	Exhaust Connection (Diameter)	N/A		
	Compressed Air Connection	N/A		
	Compressed Air Volume	N/A		
	Oven Size	N/A		
<b>STEAM</b>	kW	Btu/hr	kcal/hr	
	Voltage Available	208-575v 3ø 3,4w 50/60 Hz		
	Approx. Net Weight	2,349 lb (1,065.49 kg)		
	Approx. Shipping Weight	2,515 lb (1,140.78 kg)		
	Airflow	50/60 Hz	4,400 cfm (124.59 cmm)	
	Steam Consumption	540 lb/hr (245 kg/hr)		
	Operating Steam Pressure	125 psi max (8.62 bar)		
	Exhaust Connection (Diameter)	20 (50.80 cm)		
	Compressed Air Connection	1/4 Quick Connection		
	Compressed Air Volume	4.25 cfm (0.12 cmh)		
Boiler HP (Normal Load)	14.5 Bhp			
Standard Supply Connection*	(1) 1-1/2 N.P.T. (Female)			
Standard Return Connection*	(1) 1-1/2 N.P.T. (Female)			

\* Refer to installation manual for optional steam connections.

REV 5/30/14



Electrical Service Specifications					
SERVICE VOLTAGE	PHASE	WIRE SERVICE	APPROX AMP DRAW		CIRCUIT BREAKER
			60 Hz	50 Hz	
GAS & STEAM					
208	3ø	3	37.0	--	50
220	3ø	3	35.0	--	50
220	3ø	3	--	36.0	50
230	3ø	3	34.0	--	50
230	3ø	3	--	30.0	50
240	3ø	3	35.0	--	50
380	3ø	3	19.0	--	30
380	3ø	4	--	18.0	30
400	3ø	4	--	17.0	30
416	3ø	4	--	17.0	30
460	3ø	3	19.0	--	30
480	3ø	3	19.0	--	30
575	3ø	3	14.0	--	20
ELECTRIC					
220	3ø	3	312.0	--	400.0
240	3ø	3	338.0	--	425.0

