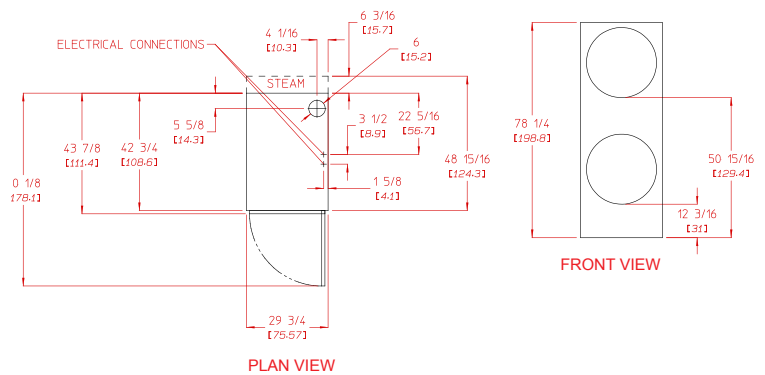
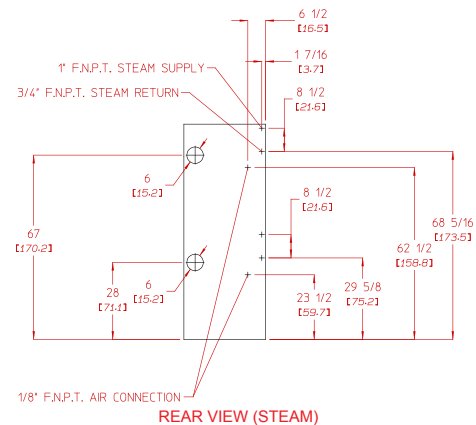
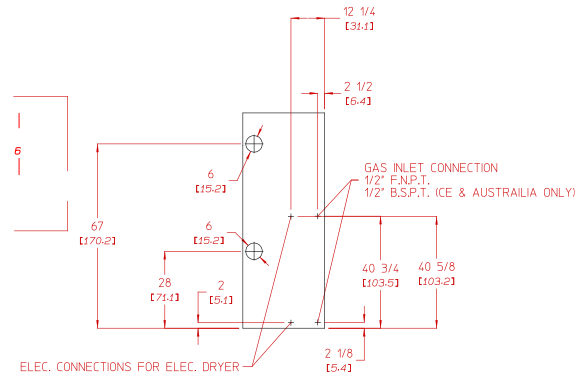




## AD-330 Specifications

Tumbler Capacity (dry weight)	30 lbs. (13.60 kg) x 2	
Tumbler Diameter	27-1/4 (69.2 cm)	
Tumbler Depth	30 (76.2 cm)	
Tumbler Volume	10.1 cu ft (286.0 L)	
Tumbler/Drive Motor	1/3 hp (0.25 kW)	
Blower/Fan Motor	N/A	
Door Opening (diameter)	21-1/2 (54.6 cm)	
Door Sill Height (top pocket/bottom pocket)	52-3/8 (133.033 cm) 14-1/4 (36.195 cm)	
S.A.F.E. Water Connection	3/4 (11.5 NH) F.N.P.T. 3/4 B.S.P.T. (outside North America)	
Dryers per 20h/406ontainer	14 / 28	
Dryers per 48h/53fruck	34 / 36	
Width	29-3/4 (75.57 cm)	
Depth	Gas & Electric	43-7/8 (111.43 cm)
	Steam	48-15/16 (124.3 cm)
Height	78-1/4 (198.8 cm)	
Airflow gas/electric/steam	60 Hz	400 cfm (11.33 cmm)
	50 Hz	333 cfm (9.44 cmm)
Exhaust Connection	6 (15.24 cm)	
GAS MODEL:	Voltage Available	100-240v 1ø 2w 50/60 Hz
	Approx. Net Wt.	793 lbs (359.7 kg)
	Approx. Ship Wt.	860 lbs (390.1 kg)
	Heat Input (per pocket)	68,000 btu/hr (17,135 kcal/hr)
	Inlet Pipe Connection	1/2 F.N.P.T. 1/2 B.S.P.T. (CE and Australia Only)
ELECTRIC MODEL:	Voltage Available	208-416v 1,3ø 2,3,4w 50/60 Hz
	Approx. Net Wt.	793 lbs (359.7 kg)
	Approx. Ship Wt.	860 lbs (390.1 kg)
Oven Size per pocket		
kW	Btu/hr (kcal/hr)	
15	51,228 (12,910)	
STEAM MODEL: *	Voltage Available	100-240v 1ø 2w 50/60 Hz
	Approx. Net Wt.	837 lbs (379.7 kg)
	Approx. Ship Wt.	884 lbs (401.0 kg)
	Steam Consumption (per pocket)	101 lbs/hr (45.8 kg/hr)
	Operating Steam Pressure	125 psi max. (8.6 bar)
	Compressed Air Connection	1/8 F.N.P.T.
	Compressed Air Volume	0.5 cfm (0.014 cmm)
	Boiler Horsepower (per pocket)	2.9 Bhp
	Supply Connection	1 F.N.P.T.
	Return Connection	3/4 F.N.P.T.



Specifications in parentheses are metric equivalents.  
 \*Dryer must be provided with clean, dry and regulated  
 80 psi +/- 10 psi (5.51 bar +/- 0.69 bar) air supply.

6/22/12

Electrical Service Specifications						
GAS & STEAM						
SERVICE VOLTAGE	PHASE	WIRE SERVICE	OVEN kW	APPROX AMP DRAW		CIRCUIT BREAKER
				60 Hz	50 Hz	
100	1ø	2	--	7.8	8.0	15
115	1ø	2	--	7.8	--	15
208	1ø	2	--	4.8	--	15
220	1ø	2	--	--	3.6	15
240	1ø	2	--	4.4	4.3	15

Electrical Service Specifications						
ELECTRIC						
SERVICE VOLTAGE	PHASE	WIRE SERVICE	OVEN kW	APPROX AMP DRAW		CIRCUIT BREAKER
				60 Hz	50 Hz	
208	1ø	2	15	76.9	--	110
240	1ø	2	15	66.9	66.8	90
208	3ø	3	15	46.4	--	70
220	3ø	3	15	--	43.7	60
240	3ø	3	15	40.5	40.4	60
380-440	3ø	4*	15	--	27.1	45
416	3ø	4*	15	--	25.1	45
480	3ø	3	15	23.1	--	45